

## Tableau des stations de dragage

	Lat. On Bottom °N	Long. On Bottom °W	Lat. Off Bottom °N	Long. Off Bot.tom °W	Depth (m)
DR1	0.8238	29.6589	0.8508	29.6757	2040
DR2	0.8257	29.3691	0.8420	29.3716	2450
DR3	0.9172	29.2239	0.9355	29.2272	1160
DR4	0.9114	28.2643	0.9096	28.2612	2855
DR5	0.9965	28.2599	0.9828	28.2547	4285
DR6	0.9303	28.5091	0.9301	28.5043	3430
DR7	0.8683	28.6957	0.8544	28.6961	2925
DR8	0.9533	29.0390	0.9741	29.0395	3480
DR8bis	0.9522	29.0442	0.9748	29.0441	3535
DR9	1.0120	28.8458	0.9994	28.8410	2810
DR10	1.0227	28.1947	1.0537	28.1945	4390
DR11	0.9198	27.5889	0.9479	27.5570	3650
DR12	1.0550	27.7553	1.0700	27.7608	4515
DR13	1.0605	27.7929	1.0710	27.7988	3510
DR14	1.0392	27.7766	1.0330	27.7800	4140
DR15	0.9880	27.7081	0.9657	27.7087	4390
DR16	0.7165	26.8198	0.7123	26.8235	3005
DR17	0.7071	26.9735	0.6911	26.9765	2990
DR18	0.8365	26.5635	0.8385	26.5515	2670
DR18Bis	0.8349	26.5120	0.8225	26.5182	2740
DR19	0.7198	26.5593	0.7215	26.5417	2400
DR20	0.8015	26.3308	0.8247	26.3455	4700
DR21	0.8349	26.3842	0.8293	26.4020	4770
DR22	0.8379	26.3703	0.8389	26.3535	4690
DR23	0.8986	26.3584	0.8789	26.3532	4750
DR24	0.8179	26.2396	0.8317	26.2253	3270
DR25	0.8108	26.3147	0.8212	26.3082	4065
DR26	0.7286	24.8688	0.7472	24.8850	3335
DR27	0.7591	25.1105	0.7483	25.1198	2935
DR28	0.7002	25.2307	0.7021	25.2230	3400
DR29	0.6394	25.3851	0.6579	25.3899	3820
DR30	0.5867	25.7971	0.5936	25.7975	2940
DR31	0.6192	25.8410	0.6156	25.8501	3215

## Acquisition des données de gravimétrie

Date	Heure	Latitude (deg.,min.milli)	Longitude (deg.,min.milli)		Observation
28/01/13	08:08:02	S 0° 0,4967'	W 32° 36,71213'	Marche	Arrivée sur zone
26/02/13	09:40:14	S 0° 9,6802'	W 30° 31,16406'	Arrêt	Départ de la zone

### Acquisition de données de magnétisme

Date	Time	Latitude	Longitude	Geometry	Action
28/01/2013	09:18:49	N 0° 10,22946'	W 32° 35,53878'	with seismics	start acquisition
29/01/2013	07:56:07	S 0° 3,11309'	W 31° 37,92146'		stop acquisition
29/01/2013	17:09:02	N 0° 3,26051'	W 31° 38,64251'	with seismics	start acquisition
01/02/2013	23:57:36	N 1° 21,31712'	W 31° 22,63151'		stop acquisition
02/02/2013	05:11:36	N 1° 17,9204'	W 31° 19,63721'	with seismics	start acquisition
03/02/2013	10:21:18	N 0° 51,30998'	W 29° 38,527'		stop acquisition
04/02/2013	08:19:33	N 0° 53,20118'	W 29° 7,73832'	with seismics	start acquisition
06/02/2013	19:34:47	N 0° 39,01297'	W 28° 0,3479'		stop acquisition
09/02/2013	10:07:29	N 1° 3,45389'	W 28° 9,16369'	with cable	start acquisition
10/02/2013	17:07:27	N 0° 35,9989'	W 27° 29,93092'		stop acquisition
12/02/2013	14:33:06	N 0° 57,2639'	W 27° 41,55117'	with cable	start acquisition
14/02/2013	11:49:59	N 0° 37,91222'	W 26° 41,9184'		stop acquisition
18/02/2013	02:32:51	N 0° 48,80107'	W 26° 34,03765'	with cable	start acquisition
18/02/2013	16:38:07	N 1° 19,20823'	W 25° 20,19038'		stop acquisition
18/02/2013	20:15:24	N 1° 18,95296'	W 25° 20,3076'	with cable	start acquisition
20/02/2013	12:49:56	N 0° 24,851'	W 24° 36,92011'		stop acquisition
23/02/2013	09:20:28	N 0° 29,69271'	W 25° 49,11135'	with seismics	start acquisition
24/02/2013	09:04:57	N 0° 10,02149'	W 27° 49,34762'		stop acquisition
24/02/2013	14:01:07	N 0° 10,00484'	W 27° 49,70158'	with seismics	start acquisition
26/02/2009	07:33:11	N 0° 3,89962'	W 30° 22,99855'		stop acquisition

## Acquisition de données de sondeur de sédiments 3.5 kHz

Date	Heure	Latitude(deg., min.milli)	Longitude(deg., min.milli)	Nom Action	Observation
28/01/13	08:34:34	N 0° 4,50922'	W 32° 36,90638'	En marche	arrivée sur zone et début enregistrement
29/01/13	07:07:10	S 0° 0,49023'	W 31° 39,8683'	A l'arrêt	
29/01/13	17:08:50	N 0° 3,26051'	W 31° 38,64251'	En marche	fichier 008
02/02/13	00:31:16	N 1° 21,01641'	W 31° 23,04095'	A l'arrêt	
02/02/13	04:25:01	N 1° 19,51179'	W 31° 21,99251'	En marche	
03/02/13	09:35:00	N 0° 53,48961'	W 29° 39,0517'	A l'arrêt	
03/02/13	18:50:34	N 0° 49,42882'	W 29° 34,76671'	En marche	
03/02/13	20:10:06	N 0° 48,65775'	W 29° 23,26289'	A l'arrêt	
04/02/13	02:23:13	N 0° 50,91044'	W 29° 22,20707'	En marche	
04/02/13	03:40:21	N 0° 54,97198'	W 29° 13,44235'	A l'arrêt	
04/02/13	06:34:39	N 0° 55,5766'	W 29° 13,5316'	En marche	
06/02/13	19:33:49	N 0° 39,16473'	W 28° 0,38747'	A l'arrêt	
06/02/13	20:35:35	N 0° 34,89914'	W 27° 58,79082'	En marche	
07/02/13	04:29:06	N 1° 0,60147'	W 28° 11,53372'	A l'arrêt	arrêt suite crash EM122
07/02/13	07:40:32	N 1° 0,65027'	W 28° 11,40821'	En marche	
07/02/13	08:17:25	N 1° 0,47071'	W 28° 15,98054'	A l'arrêt	
07/02/13	12:30:44	N 0° 58,37539'	W 28° 14,84063'	En marche	
07/02/13	17:47:47	N 0° 55,80751'	W 28° 30,16812'	A l'arrêt	pas de SDS pendant la drague 6
07/02/13	22:44:01	N 0° 53,12291'	W 28° 33,1463'	En marche	
07/02/13	23:44:46	N 0° 52,74246'	W 28° 41,78333'	A l'arrêt	
08/02/13	03:04:17	N 0° 50,76991'	W 28° 41,47976'	En marche	
08/02/13	06:15:19	N 0° 55,82047'	W 29° 2,18811'	A l'arrêt	
08/02/13	15:39:36	N 0° 58,95719'	W 29° 2,02895'	En marche	
08/02/13	17:00:07	N 1° 1,14131'	W 28° 50,94798'	A l'arrêt	
08/02/13	20:44:22	N 0° 58,80329'	W 28° 49,79862'	En marche	
08/02/13	22:58:01	N 0° 59,26779'	W 28° 30,67721'	A l'arrêt	
09/02/13	01:15:05	N 0° 59,22237'	W 28° 30,53994'	En marche	
09/02/13	03:52:00	N 1° 0,46781'	W 28° 11,61236'	A l'arrêt	
09/02/13	09:55:39	N 1° 3,40868'	W 28° 9,70734'	En marche	
10/02/13	18:55:59	N 0° 50,06212'	W 27° 34,95062'	A l'arrêt	
11/02/13	06:12:29	N 0° 57,44711'	W 27° 35,00273'	En marche	
11/02/13	07:06:00	N 0° 56,85132'	W 27° 41,45765'	A l'arrêt	
11/02/13	10:32:29	N 0° 57,09794'	W 27° 41,38013'	En marche	
11/02/13	11:14:50	N 1° 2,82056'	W 27° 45,42022'	A l'arrêt	

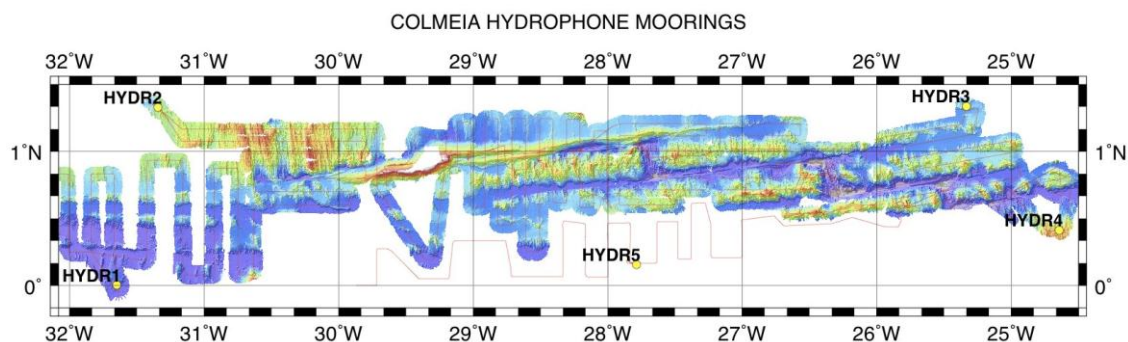
11/02/13	16:38:48	N 1° 3,12408'	W 27° 45,25252'	En marche	
11/02/13	17:52:32	N 1° 3,99659'	W 27° 45,43756'	A l'arrêt	
12/02/13	14:26:19	N 0° 57,22583'	W 27° 42,25426'	En marche	
14/02/13	13:03:00	N 0° 43,56434'	W 26° 49,39306'	A l'arrêt	
14/02/13	17:58:08	N 0° 42,17899'	W 26° 50,34691'	En marche	
14/02/13	19:41:21	N 0° 40,85482'	W 26° 58,8742'	A l'arrêt	
15/02/13	04:29:55	N 0° 52,61093'	W 26° 57,63277'	En marche	
15/02/13	06:09:31	N 0° 52,15237'	W 26° 44,38777'	A l'arrêt	
15/02/13	09:26:14	N 0° 52,20218'	W 26° 44,40852'	En marche	
15/02/13	11:07:47	N 0° 55,1458'	W 26° 33,48347'	A l'arrêt	
16/02/13	02:29:26	N 0° 43,18994'	W 26° 31,14484'	En marche	
16/02/13	04:01:41	N 0° 39,78397'	W 26° 17,24508'	A l'arrêt	
18/02/13	02:48:58	N 0° 47,17094'	W 26° 34,70043'	En marche	
18/02/13	17:07:26	N 1° 20,30346'	W 25° 20,19629'	A l'arrêt	
18/02/13	20:07:38	N 1° 19,04399'	W 25° 20,85349'	En marche	
19/02/13	16:31:03	N 0° 47,79509'	W 25° 33,64588'	A l'arrêt	
19/02/13	17:12:48	N 0° 47,66603'	W 25° 34,2828'	En marche	
20/02/13	13:25:02	N 0° 24,90568'	W 24° 39,88321'	A l'arrêt	
20/02/13	16:05:16	N 0° 23,76846'	W 24° 39,17128'	En marche	
20/02/13	20:27:04	N 0° 45,78995'	W 24° 47,97459'	A l'arrêt	
20/02/13	20:48:19	N 0° 45,75022'	W 24° 47,77649'	En marche	
21/02/13	02:51:39	N 0° 43,8317'	W 24° 51,43374'	A l'arrêt	
21/02/13	07:41:10	N 0° 46,27412'	W 24° 54,16969'	En marche	
21/02/13	08:53:22	N 0° 38,76055'	W 25° 1,78609'	A l'arrêt	
21/02/13	17:51:37	N 0° 42,99367'	W 25° 6,01762'	En marche	
21/02/13	19:43:46	N 0° 28,97516'	W 24° 58,78342'	A l'arrêt	
22/02/13	20:17:00	N 0° 42,16523'	W 25° 30,9119'	En marche	
22/02/13	22:26:06	N 0° 34,79371'	W 25° 48,22099'	A l'arrêt	
23/02/13	08:13:24	N 0° 35,12676'	W 25° 50,35189'	En marche	
24/02/13	12:02:29	N 0° 9,2027'	W 27° 47,21225'	A l'arrêt	
24/02/13	13:36:23	N 0° 9,17879'	W 27° 48,42125'	En marche	
26/02/13	07:34:16	N 0° 3,724686'	W 30° 23,018598'	A l'arrêt	Fin acquisition

## Acquisition de données de sismique rapide

<b>Date</b>	<b>Heure</b>	<b>Latitude (deg.,min.milli)</b>	<b>Longitude (deg.,min.milli)</b>	<b>Nom Appareil</b>	<b>Nom Action</b>
28/01/13	09:17:38	N 0° 10,18174'	W 32° 35,60236'	Sismique RAPIDE	Mise à l'eau
28/01/13	10:32:57	N 0° 13,55647'	W 32° 30,43439'	Sismique RAPIDE	Début acquisition
29/01/13	07:03:56	S 0° 0,08589'	W 31° 40,14238'	Sismique RAPIDE	Fin acquisition
29/01/13	07:54:08	S 0° 3,02141'	W 31° 37,99351'	Sismique RAPIDE	A bord
29/01/13	16:00:13	N 0° 0,95659'	W 31° 39,83427'	Sismique RAPIDE	Mise à l'eau
29/01/13	17:08:27	N 0° 3,19984'	W 31° 38,6245'	Sismique RAPIDE	Début acquisition
01/02/13	23:15:58	N 1° 19,9236'	W 31° 19,94855'	Sismique RAPIDE	Fin acquisition
01/02/13	23:57:10	N 1° 21,30691'	W 31° 22,60483'	Sismique RAPIDE	A bord
02/02/13	04:32:39	N 1° 19,35738'	W 31° 21,72943'	Sismique RAPIDE	Mise à l'eau
02/02/13	16:26:10	N 1° 9,77606'	W 29° 43,02279'		
02/02/13	16:30:44	N 1° 9,16971'	W 29° 42,93092'	Sismique RAPIDE	Début acquisition
03/02/13	09:35:00	N 0° 53,48961'	W 29° 39,0517'	Sismique RAPIDE	Fin acquisition
03/02/13	10:19:36	N 0° 51,37987'	W 29° 38,57878'	Sismique RAPIDE	A bord
04/02/13	07:19:35	N 0° 54,24588'	W 29° 11,76997'	Sismique RAPIDE	Mise à l'eau
04/02/13	07:47:28	N 0° 53,5106'	W 29° 10,44314'		
04/02/13	08:11:49	N 0° 53,13011'	W 29° 8,62264'		
04/02/13	08:33:51	N 0° 55,13285'	W 29° 7,02353'	Sismique RAPIDE	Début acquisition
06/02/13	19:32:06	N 0° 39,49751'	W 28° 0,39802'	Sismique RAPIDE	Fin acquisition
06/02/13	20:22:57	N 0° 35,16812'	W 27° 58,47793'	Sismique RAPIDE	A bord
23/02/13	09:08:15	N 0° 30,56395'	W 25° 49,36903'	Sismique RAPIDE	Mise à l'eau
23/02/13	09:41:15	N 0° 27,51803'	W 25° 49,72433'	Sismique RAPIDE	Début acquisition
24/02/13	08:45:49	N 0° 10,00166'	W 27° 47,53106'	Sismique RAPIDE	Fin acquisition
24/02/13	09:30:26	N 0° 10,01654'	W 27° 50,99151'	Sismique RAPIDE	A bord
24/02/13	14:00:46	N 0° 9,99806'	W 27° 49,68584'	Sismique RAPIDE	Mise à l'eau
24/02/13	14:34:57	N 0° 12,41005'	W 27° 50,02655'	Sismique RAPIDE	Début acquisition
24/02/13	19:55:11	N 0° 3,81768'	W 28° 1,32268'	Sismique RAPIDE	Fin acquisition
24/02/13	20:28:19	N 0° 3,80423'	W 28° 7,19982'	Sismique RAPIDE	Début acquisition
26/02/13	07:33:06	N 0° 3,899622'	W 30° 22,998552'	Sismique RAPIDE	Fin acquisition
26/02/13	09:38:52	S 0° 9,624426'	W 30° 31,130334'	Sismique RAPIDE	A bord

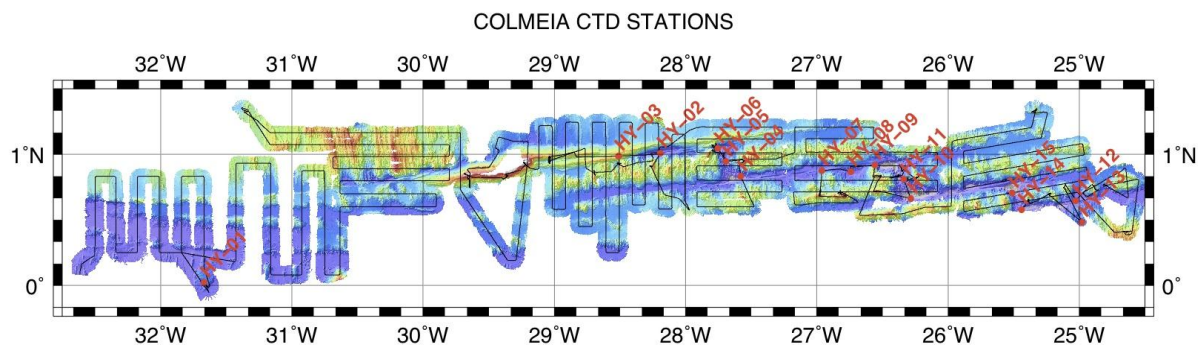
### Localisation des mouillages d'hydrophones

Hidrofone	Date	Heure (UTC)	Latitude N	Longitude O	Profondeur
COLMEIA 1	29/01/13	08:50:20	00° 00,18'	031° 39,00'	4000
COLMEIA 2	02/02/13	00:53:28	01° 19,74'	031° 20,64'	2980
COLMEIA 3	18/02/13	17:36:14	01° 20,16'	025° 20,04'	3050
COLMEIA 4	20/02/13	13:34:41	00° 24,72'	024° 38,64'	2600
COLMEIA 5	24/02/13	10:42:51	00° 09,30'	027° 47,16'	3770



### Localisation des stations de bathysonde CTD avec néphélométrie et échantillonnage de la colonne d'eau

CTD station	date	heure (UTC)	latitude	longitude	profondeur
COL-HY-01	29/01/13	13:10	00°01.422	031°40.226	3782
COL-HY-02	07/02/13	04:28	01°00.604	028°11.532	4647
COL-HY-03	08/02/13	23:02	00°59.282	028°30.721	2624
COL-HY-04	10/02/13	19:06	00°49.946	027°34.716	4872
COL-HY-05	11/02/13	07:10	00°56.757	027°41.481	4445
COL-HY-06	11/02/13	11:25	01°02.789	027°45.311	4709
COL-HY-07	15/02/13	01:38	00°52.523	026°57.692	3936
COL-HY-08	15/02/13	06:21	00°52.049	026°44.424	4469
COL-HY-09	15/02/13	11:11	00°55.128	026°33.485	4089
COL-HY-10	16/02/13	03:49	00°39.780	026°17.085	4924
COL-HY-11	16/02/13	08:40	00°48.578	026°20.221	4588
COL-HY-12	21/02/13	09:00	00°38.764	025°01.742	4442
COL-HY-13	21/02/13	19:46	00°28.948	024°58.762	4006
COL-HY-14	22/02/13	12:51	00°34.678	025°26.400	4678
COL-HY-15	22/02/13	17:05	00°42.306	025°30.622	4667



### Localisation des tirs Sippican

Date	Heure	Latitude	Longitude	Tipo	Profondeur
01/28/2013	09:07:02	0° 9.62 N	32° 36.10 W	T-5	1830,5 m
01/29/2013	08:01:59	0° 2.78 S	31° 38.06 W	T-5	1830,5 m
01/30/2013	21:41:55	0° 34.61 N	30° 55.50 W	T-7	760,1 m
01/31/2013	09:37:58	0° 36.00 N	30° 32.52 W	T-7	760,1 m
01/31/2013	16:59:49	0° 42.00 N	30° 22.96 W	T-7	760,1 m
02/02/2013	00:08:13	0° 34.61 N	30° 55.50 W	T-5	1830,5 m
02/05/2013	11:46:25	0° 42.24 N	28° 36.50 W	T-7	760,1 m
02/08/2013	16:07:46	0° 59.53 N	28° 58.26 W	T-7	1000,4 m
02/09/2013	16:56:53	1° 7.00 N	27° 19.27 W	T-7	1000,4 m
02/10/2013	08:06:51	0° 48.20 N	27° 32.06 W	T-7	1000,4 m
02/14/2013	20:05:41	0° 44.02 N	26° 58.21 W	T-5	1830,5 m
02/18/2013	12:11:42	1° 6.62 N	25° 55.68 W	T-7	760,1 m
02/18/2013	16:44:20	1° 19.79 N	25° 20.04 W	T-5	1830,5 m
02/20/2013	07:59:20	0° 40.40 N	25° 14.26 W	T-7	760,1 m
02/20/2013	12:49:18	0° 24.84 N	24° 36.96 W	T-5	1830,5 m
02/21/2013	08:05:20	0° 43.98 N	24° 56.69 W	T-7	760,1 m
02/23/2013	08:22:46	0° 34.26 N	25° 50.21 W	T-5	1830,5 m
02/24/2013	09:42:32	0° 10,741 N	27° 51,50 W	T-7	760,1 m

